



Emergency
Management

EMERGENCY OPERATIONS CENTRE

EVACUATION ORDER DOWNGRADED TO ALERT

Date: August 21, 2024

Time: 16:00 hrs

The Regional District of Central Kootenay has been advised that the potential threats to people and property in the Regional District of Central Kootenay posed by the Mulvey Creek Wildfire has diminished at this time.

The **Evacuation Order** issued for that portion of the Slocan Lake Wildfire Complex starting at the intersection of Evans Creek and Slocan Lake, extending approximately 3.3 kilometers south along the shore of Slocan Lake; then 3.3 kilometers west to point at the height of land between Gwillim and Evans Creeks; then 3 kilometers north to the Evans Creek; and then east along Evans Creek to the intersection of Evans Creek and Slocan Lake by the Regional District of Central Kootenay Emergency Operations Centre (EOC) is no longer required and is **Downgraded To Evacuation Alert** effective immediately for the following properties (see attached map):

Addresses:

9557 Slocan Lake

Parcel Identifiers (PIDs – properties without an address):

018-314-171

024-338-958

024-338-974

019-156-031

024-338-966


This **Evacuation Order Downgrade to Alert** places the above noted properties affected by the Mulvey Creek Fire on **Evacuation Alert**.

The State of Local Emergency for Electoral Area H in the Regional District of Central Kootenay remains.

There are currently 340 addresses on Evacuation Alert due to the Slocan Lake Complex.

There are currently 3 parcels on Evacuation Order due to the Slocan Lake Complex.

In the event that conditions change, **Evacuation Alerts** or **Orders** may be re-issued and the evacuation process will re-commence

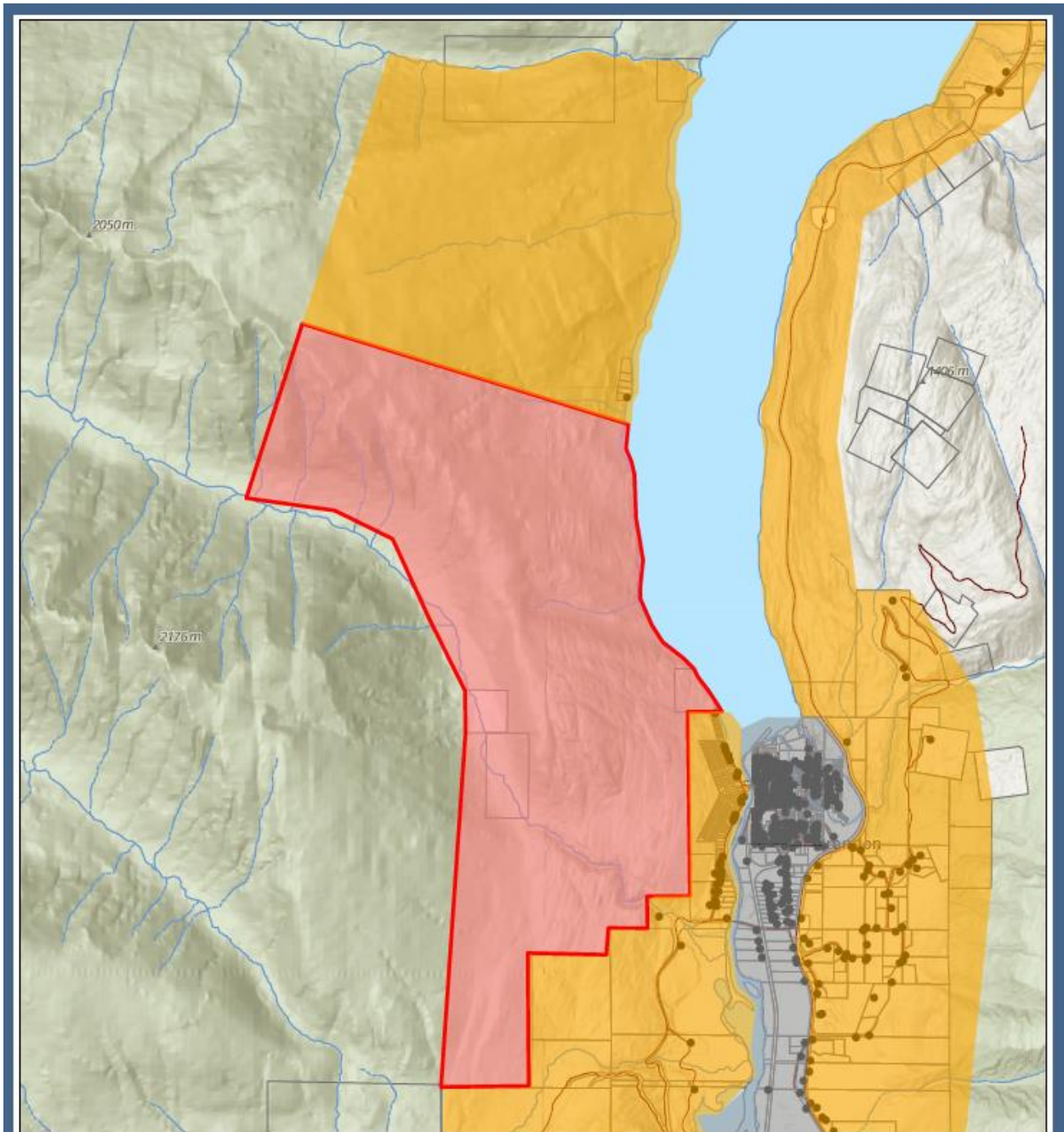


Nora Hannon
Director, Emergency Operations Centre

August 21, 2024

Date

For more information: EOCinfo@rdck.bc.ca | 250-352-7701
or visit rdck.ca/EOCinfo



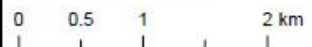
**REGIONAL DISTRICT OF
CENTRAL KOOTENAY
EMERGENCY
OPERATIONS CENTRE**

EOC Phone: 250-352-7701 or 1-866-522-7701
 Current Emergency Information:
rdck.ca/EOCinfo
 Register to receive emergency notifications:
rdck.ca/notifications
 To report a flood, landslide, spill or other hazards:
 1-800-663-3456

Slovan Lake Complex Wildfire Evacuation Order to Alert

- Streets
- Addresses
- Legal Parcels
- Streams and Shorelines
- Evacuation Alert
- Evacuation Order

Map Scale: 1:47,000



The mapping information shown are approximate representations and should only be used for reference purposes. The Regional District of Central Kootenay is not responsible for any errors or omissions on this map.